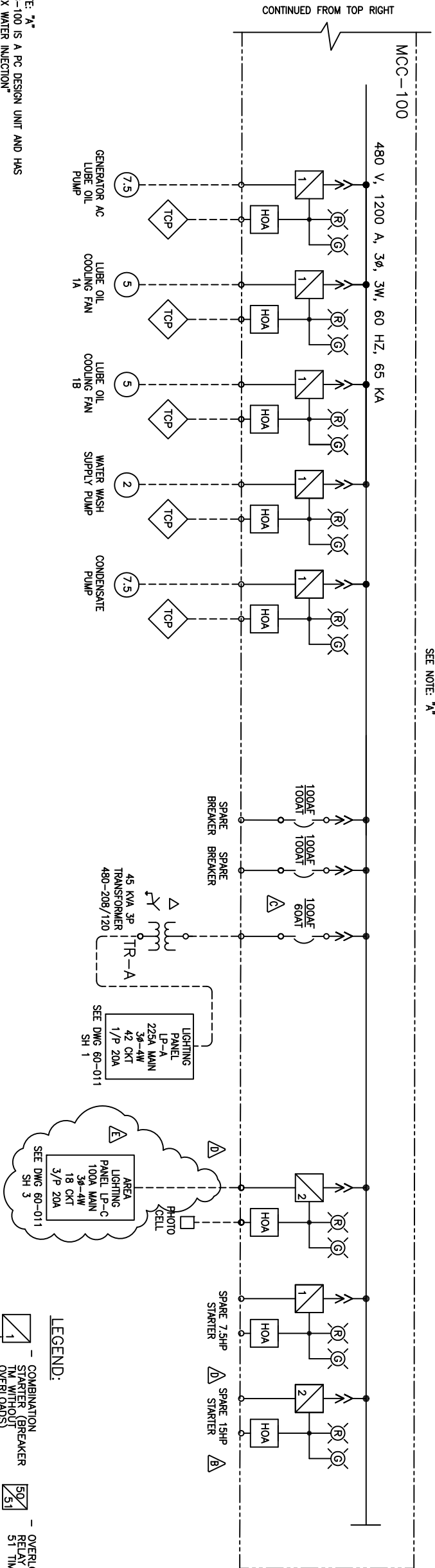


NOTE: "A"
GTG-100 IS A PC DESIGN UNIT AND HAS
"NOX WATER INJECTION"
GTG-200 IS A PD DESIGN AND DOES NOT
HAVE "NOX WATER INJECTION".



LEGEND:

COMBINATION
STARTER (BREAKER
MCP WITH MOTOR OVER
LOADS)

STARTER SIZE

BREAKER
DRAW OUT TYPE

HOA - HAND-OFF-AUTO
SWITCH

M.O - MOTOR

HORSEPOWER (HP)

INDICATING LIGHT

COLOR

TCP - TURBINE CONTROL
PANEL

TSH - TEMPERATURE SWITCH

E.O - BREAKER
ELECTRICALLY OPERATED

M.O - BREAKER
MANUALLY OPERATED

D.O - BREAKER
DRAW OUT

M - MOTOR SPACE

HEATER

REVISED

CUSTOMER INFORMATION

© COPYRIGHT, 2008. Preliminary Services. All Rights Reserved.
THIS DRAWING IS THE PROPERTY AND/OR CONFIDENTIAL
PROPERTY OF PROENERGY SERVICES AND IS LOANED IN
STRICT CONFIDENCE WITH THE UNDERSTANDING THAT IT WILL
NOT BE REPRODUCED NOR USED FOR ANY PURPOSE EXCEPT
THAT FOR WHICH IT IS LOANED. IT SHALL BE IMMEDIATELY
RETURNED ON DEMAND, AND IS SUBJECT TO ALL OTHER TERMS
AND CONDITIONS OF ANY WRITTEN AGREEMENT OR PURCHASE
ORDER WHICH INCORPORATES OR RELATES TO THIS DRAWING.

NO.	DATE	BY	APP'D	DESCRIPTION	REVISIONS
E	8/04/09	SJP		REMOVED TRC & CHANGED PANEL TO 480 3/P	
D	8/17/09	RSB	WA	REMOVED STARTER SIZE, INSERTED TR-C	
C	8/09/09	BA	WA	REPLACED DCS WITH TSH & ADDED BKR RATING	
B	7/29/09	BA	WA	REVISE "HP"	

DRAWN	BLA	07/15/09
CHECK	RS	7/11/09
DESIGN	PROJ ENGR	
PROJ MGR		
QA MGR		
SCALE	NONE	SIZE D

ProEnergy
EPC SERVICES

807 S DETROIT
SUITE 1400
TULSA, OKLAHOMA 74120
OFFICE 907-829-5100
FAX 918-270-2839
www.proenergyservices.com

ProEnergy EPC Services, LLC

ONE LINE DIAGRAM
GTG MCC-100
TACOA POWER PLANT

CAD/CAS
JOB NO. 0906
DWG NO. 60-002
SH NO. 1
REV E